

Communicable Disease Protocol for Oak Ridge Schools

Communicable Disease Team (CDT)

Comprised of leaders from Oak Ridge Schools and Anderson County Health Department. As needed, other city or county officials may interact on the team.

The CDT is charged with continuously monitoring guidance from the Centers for Disease Control (CDC) as well as guidance from state and local health agencies. Additionally, the CDT will monitor student and employee attendance and make proactive recommendations to mitigate the risk of spreading communicable diseases. As the COVID-19 situation continues to evolve, the following contingency plans are based upon guidance provided in early March and will continue to evolve as experts learn more about the disease and vaccines and better treatment options are developed and more readily available.

A. School/District Closures

A.1. If an ill student, parent or employee attended school within 14 days prior to being confirmed as a COVID-19 case:

A.1.1. If a student, school-based employee, or district-level employee who has worked in a school is reported to have contracted COVID-19, the CDT will:

- Confirm the case with the Anderson County Health Department or physician
- Communicate possible COVID-19 exposure to the school community while protecting the identity of the individual
- Close the affected school/building for a minimum of 2 - 5 calendar days to stringently clean the facility and will reassess at the end of that timeframe; absolutely no staff will be allowed entry to the closed facility, except for designated cleaning personnel
- Inform the community of Oak Ridge Schools' plan and communicate proactive ways the community can continue to help mitigate the risk of spreading the disease
- Inform families of district plans via Skylert, social media, local media, and on the website.
- Plan for system of pay for hourly employees in the event of a closure (Board Policy 1.8011)

A.1.2. If person living in the same home of student, same home of a school-based employee or district-level employee who has visited a school is reported to have contracted COVID-19, the CDT will:

- Confirm the case with the Anderson County Health Department or physician
- Communicate possible COVID-19 exposure to the school community while protecting the identity of the individual
- Disinfect thoroughly all potential affected areas. Full or partial building closures will only be considered if a building has been exposed by a person confirmed to have COVID-19.

A.1.3. If a staff member or student reports having made close contact (within 6 ft. or closer) to an individual confirmed to have COVID-19 for at least 10 minutes or more, the CDT will:

- Confirm the case with the Anderson County Health Department or physician
- Communicate possible COVID-19 exposure to the school community while protecting the identity of the individual
- Disinfect thoroughly all potential affected areas. Full or partial building closures will only be considered if a building has been exposed by a person confirmed to have COVID-19

A.1.4 If a staff member or student reports having close contact (within 6 ft.) of a person that is symptomatic for at least 10 minutes or more, but the person hasn't tested positive for COVID-19, the CDT will:

- Communicate possible COVID-19 exposure to the school community while protecting the identity of the individual
- Disinfect thoroughly all potential affected areas. Full or partial building closures will only be considered if a building has been exposed by a person confirmed to have COVID-19.

A.1.5. If there is a widespread outbreak of COVID-19 in the Oak Ridge community as determined by the CDT, the CDT will:

- Confirm the outbreak with the Anderson County Health Department or physician
- Close the entire district for a minimum of 2 – 5 calendar days and will reassess at the end of that timeframe
- Implement alternative learning experiences for continuity of education (Section C)
- Inform the community of Oak Ridge Schools' plan and communicate proactive ways the community can continue to help mitigate the risk of spreading the disease
- Inform families of district plans via Skylert, social media, local media, and on the website.
- Implement alternative Child Nutrition Services (Section D)
- Plan for system of pay for hourly employees in the event of a closure (Board Policy 1.8011)

A.2. The aforementioned scenarios are based on the assumption that the CDT is notified of a confirmed case during non-school hours. If a COVID-19 case is confirmed during the school day, an early release will be scheduled as soon as possible.

A.3. The CDT monitors student and employee attendance on a daily basis and will recommend closing the entire district based on attendance data.

B. Extracurricular Activities and Travel

Extracurricular

Any school-sponsored activity occurring outside of the regular school day including clubs, athletics, practices, rehearsals, performances, etc.

B.1. The CDT will monitor extracurricular activities and upcoming trips to make cancellation decisions.

B.1.1. If the district is closed:

- Extracurricular programs, events, athletics, etc. across the district will be cancelled for the duration of the closure

- School-sponsored student or employee travel regardless of destination will be cancelled.

B.1.2. If the district is open:

- The CDT will monitor the planned trips on a daily basis to verify if any of the destinations are experiencing closures
- If a trip is scheduled to a location where a school, district, or entity is closed, as confirmed by the CDT, the trip will be cancelled:
 - A member of the executive team will contact the school administrator and trip sponsor who will contact the parents of the affected students

B.2. The CDT will monitor professional leave trips to make cancellation decisions on a case-by-case basis.

C. Alternative Learning Experiences/Online Learning

C.1. Teachers in grades K-12 will share daily alternative, online-based learning and review opportunities through Canvas should the district be closed for an extended period. The Office of Teaching and Learning, in collaboration with the Technology Department will provide guidance, support and resources for teachers. (A.1.5.)

C.2. The communications department will inform families of district plans via Skylert, social media, local media, and on the website.

D. Temporary Attendance Policy Accommodations for Students and Employees

D.1. Ultimately, students and staff should be encouraged to stay home when sick.

D.2. The CDC offers the following guidance for employers (Board Policies 5.3051; 5.302; 5.305):

- Encourage sick employees to stay home;
- Enact sick leave policies that are flexible and consistent with public health guidance;
- Allow care for family members, and
- Forego healthcare provider notes for employees who are sick with respiratory illness;

D.3. Current student attendance policies will be reviewed and may be adjusted based on CDT recommendations.

E. Food Services

E.1. In the event of an extended, district-wide closure, the CDT will work with Food Services to potentially implement alternative food services.

F. Other Proactive Measures

F.1. Regardless of confirmed COVID-19 cases in Oak Ridge, the following proactive measures will be taken:

- Disinfect and clean all facilities until the CDC no longer recommends additional environmental cleaning efforts
- Ensure all restrooms have functional, filled soap dispensers
- Educate students and parents on the CDC's best practices for reducing the spread of the disease
- Post handwashing posters by all sinks
- Potentially suspend facility use rentals based on direction from the State or City

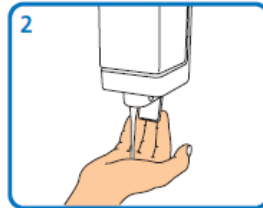
Dr. Bruce Borchers
Superintendent
Oak Ridge Schools
865.425.9001
btborchers@ortn.edu



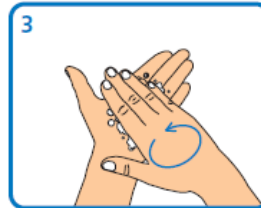
Hand-washing technique with soap and water



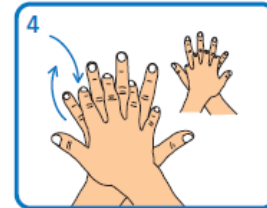
1 Where it began



2 I can't begin to knowin'



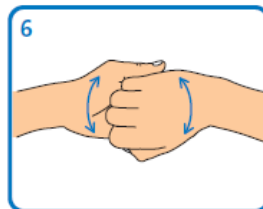
3 But then I know it's growing strong



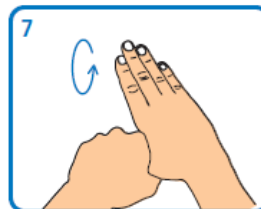
4 Was in the spring



5 And spring became the summer



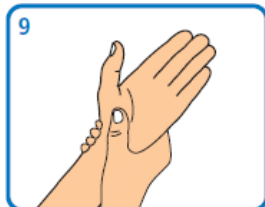
6 Who'd have believed you'd come along



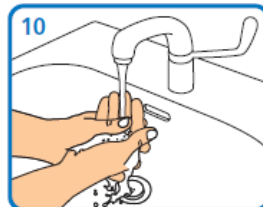
7 Hands, touchin' hands



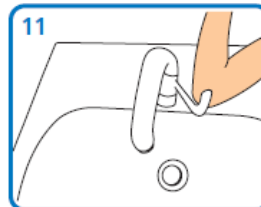
8 Reachin' out, touchin' me, touchin' you



9 Sweet Caroline



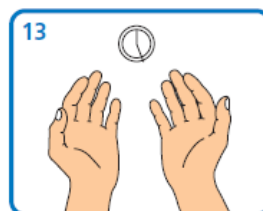
10 Good times never seemed so good



11 I've been inclined



12 To believe they never would



13 But now I look at the night

Create your own
<https://washyourlyrics.com>

Sweet Caroline
Neil Diamond

Adapted from National Health Service, who adapted from the World Health Organization **Guidelines on Hand Hygiene in Health Care**.
Created under the Open Government License. See <http://www.nationalarchives.gov.uk/doc/open-government-licence/version/3/> for details

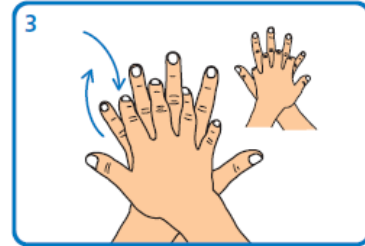
Alcohol handrub hand hygiene technique – for visibly clean hands



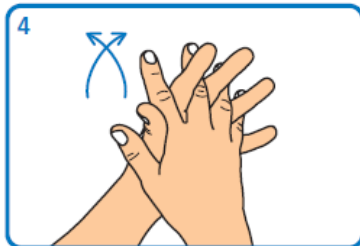
Where it began



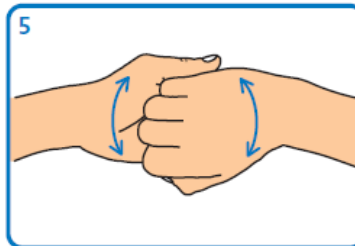
I can't begin to knowin'



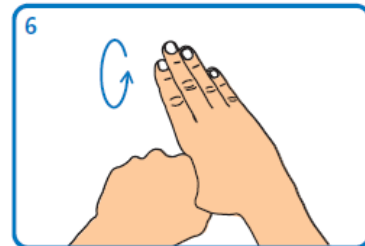
But then I know it's growing strong



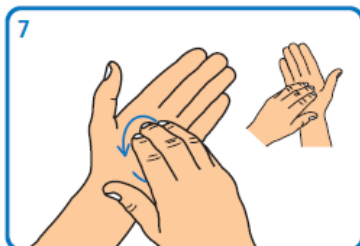
Was in the spring



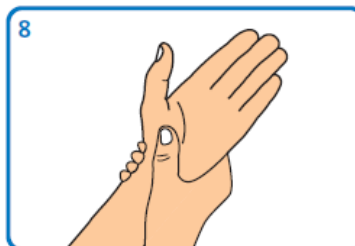
And spring became the summer



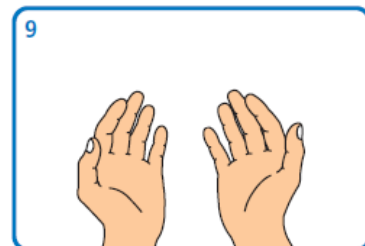
Who'd have believed you'd come along



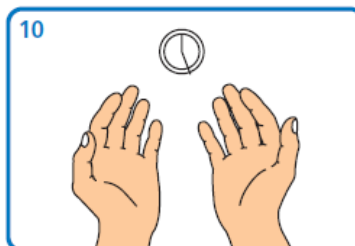
Hands, touchin' hands



Reachin' out, touchin' me, touchin' you



Sweet Caroline



Good times never seemed so good

Create your own
<https://washyourlyrics.com>

Sweet Caroline
Neil Diamond

Adapted from National Health Service, who adapted from the World Health Organization **Guidelines on Hand Hygiene in Health Care**.
Created under the Open Government License. See <http://www.nationalarchives.gov.uk/doc/open-government-licence/version/3/> for details